



PROPOSED RESIDENTIAL  
DEVELOPMENT ON LAND OFF  
BERESFORD ROAD, HOLT

---

PUBLIC CONSULTATION

## YOUR VIEW MATTERS TO US

Thank you for taking the time to read this information leaflet regarding a proposed residential development at Holt. This consultation offers you the opportunity to let us know your views and thoughts as we continue to form our proposals. What you have to say means a great deal to us and can influence and shape the future of your community.

We appreciate that people who live within the immediate vicinity of our proposals may be concerned about matters such as increased levels of road traffic, loss of views and many other topics. In order to help address these concerns, we have put together a 'your questions answered' section within this leaflet and further information can be found on our dedicated website; the address can be found at the back of this leaflet.

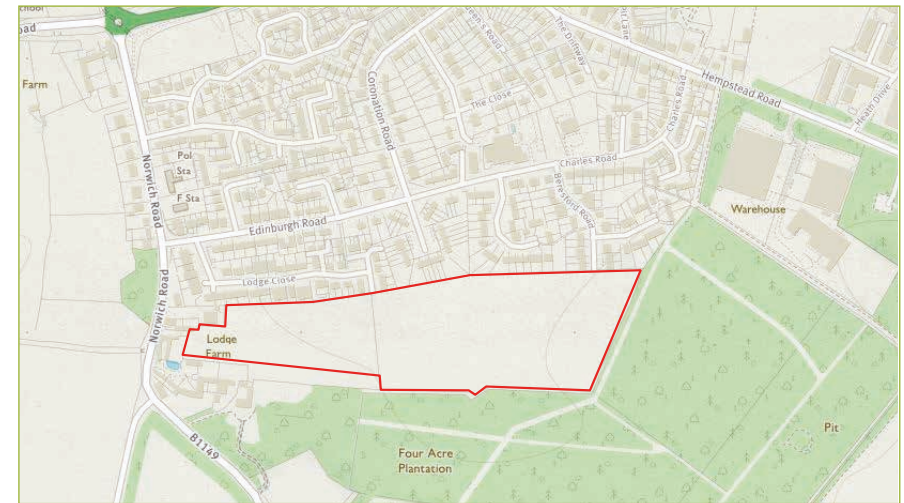
## WHO ARE GLADMAN?

Gladman is a family-run business with over 30 years of experience within the land and development industry. We are the most successful land promoter in the UK.



ILLUSTRATIVE PURPOSES ONLY

## LOCATION PLAN



Contains Ordnance Survey data © Crown copyright and database right 2018

## OUR APPROACH

Gladman recognises its responsibility to respect the character of the town and needs of the existing community, as well as providing housing for new and existing residents. We are committed to delivering additional benefits and this proposal includes the provision of land to enable the construction of a new primary school.

Your comments and contributions will be received without prejudice to your rights to comment on the planning application. By having your say, you will have helped shape the development's design and, where appropriate, off-site improvements if planning permission is granted.

## OUR DEVELOPMENT PROPOSAL

A residential development to include:

- 2.0ha of safeguarded land for the provision of a new primary school;
- Up to 110 new homes of varying sizes, types and tenures (including up to 30% affordable housing);
- New publicly accessible greenspace in the form of play areas and informal open space;
- A single priority controlled junction off Beresford Road;
- A sustainable drainage solution to manage surface water run-off including infiltration basins

### AERIAL VIEW



Image © 2018 Getmapping plc © 2018 Google



ILLUSTRATIVE PURPOSES ONLY

### HOW COULD HOLT BENEFIT?

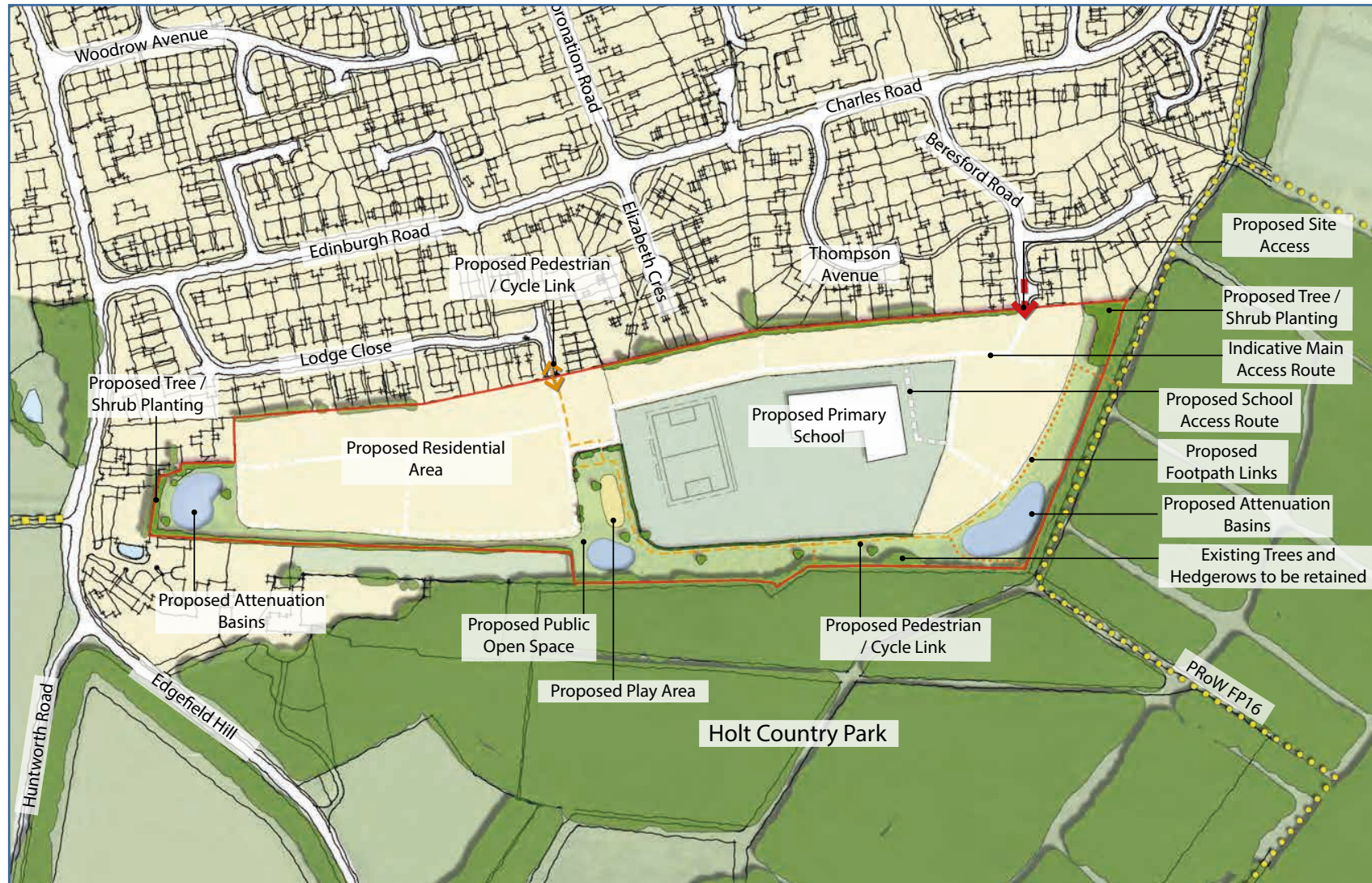
The proposed development has the potential to deliver the following benefits:

- Land for a new primary school;
- A high quality landscape setting which will be of benefit to both existing and future residents;
- New public open space for residents to enjoy;
- Equipped play space to cater for a range of ages;
- Up to 30% affordable housing (up to 33 units) to help those wanting to get onto the property ladder within your community;
- New high quality housing;
- Potential contributions to existing public facilities within Holt;
- Increased customers and spending to support local businesses.

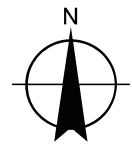
We believe that a development should provide an opportunity to improve the range and quality of services that are available in Holt. We would be very interested to hear your views on any additional services or improvements that would be of value to your community.

## PROPOSED DEVELOPMENT FRAMEWORK

The Framework Plan shows how the site could be brought forward and incorporates the constraints and opportunities identified through our initial assessments.



**ILLUSTRATIVE PURPOSES ONLY**



## YOUR QUESTIONS ANSWERED...

---



### Why Holt?

---

The proposed site is a suitable and sustainable location for new development. We believe that new homes and a new primary school will enhance the town and support its existing services and facilities.

---

### Will our roads be able to cope?

---

There are sometimes concerns associated with an increase in traffic as a result of a proposed development. Our specialist highways consultants work with your local highways authority to ensure that the development can be accommodated, taking into account any proposed improvements.

Access to the site is proposed off Beresford Road. This is considered the safest and most appropriate location to access the site and will be discussed with the local highways authority.



### What kind of housing will be provided?

---

The proposed development will be a mix of sizes, catering for all members of the community. Alongside market housing, the development will also provide up to 30% affordable homes, which will allow those such as first time buyers greater scope to remain in the area. The range of affordable homes, as defined by government, is expected to be shared ownership, discounted open market and rented homes. The exact mix of house sizes and tenures will be agreed in negotiation with your local authority housing team.

## YOUR QUESTIONS ANSWERED...

---



### Will our local services be able to cope?

---

Local businesses are likely to benefit from the additional custom that the development will generate; therefore, boosting the local economy and ensuring the future viability of these services.

---

### Will it increase the risk of flooding?

---

We conduct in-depth research into the risk of flooding and mitigate any risk that is identified. The site lies in Flood Zone 1 which is identified as being at low risk of flooding.

Our surface water strategy is to ensure that no more water runs off the site post development than currently is the case. This will be achieved through creating attenuation basins on site to hold surface water run-off, before controlling the release of this water through infiltration.



### What would this mean for the local economy?

---

After some preliminary research, taking into account the increase in people working from home, the proposed development could lead to a significant boost in local spending and a potential reduction in commuter levels to surrounding employment areas. There is an indication that the gross spending power of the new residents could be in excess of £3.3 million each year, a proportion of which will be spent in the locality.

## YOUR QUESTIONS ANSWERED...

---



### Will our services be able to cope?

---

Often people are concerned that the proposed new development will put pressure on the local services. As a result, financial contributions will be made where there is a need to increase capacity in these services.

## WHAT HAPPENS NEXT?

---

We are preparing a planning application and this consultation is part of that process. We will carefully consider your responses and use these to finalise our proposals.

A range of assessments and reports on matters such as ecology, heritage, flooding, highways and landscape will further help shape our proposals.

There will be an opportunity for you to make formal representations to North Norfolk District Council once an application has been submitted and before a decision on the proposal is made.

## YOUR VIEWS ARE IMPORTANT TO US

---

You can keep up to date on our progress using our dedicated website which includes an online feedback form for making comments:

Submit your comments and find out more on our website:  
[www.your-views.co.uk/holt](http://www.your-views.co.uk/holt)

Alternatively, contact us by email: [comments@your-views.co.uk](mailto:comments@your-views.co.uk)  
(please use "Holt" as the subject line)

Or, write to us:

Your Views; Holt  
Gladman House,  
Alexandria Way,  
Congleton,  
Cheshire,  
CW12 1LB

Please note that all of the information we are providing to you in this document and on our website is in draft form and will be refined and updated as part of the entire consultation exercise. Not only will our proposals be shaped by your responses, we also cannot be as knowledgeable as local people who have lived and often grown up in Holt, so if we have made errors or omissions in our work to date we will be grateful for help in correcting these.

---

### What impact will it have on our environment?

---

The site is currently agricultural land and is therefore home to very few species of plants or wildlife. It is accepted by wildlife experts that suburban gardens, balancing ponds and green spaces on new developments provide a home to a greater range of wildlife and flora than any farmed field. Therefore the range of biodiversity will be increased by our proposals.



A specialist ecology consultant has been appointed to survey the proposed site for protected species. To ensure that we have comprehensively evaluated the site for ecology and wildlife, additional surveys will take place prior to the determination of the planning application. Whilst the additional surveys may identify that there are protected species on-site, the development proposals will provide adequate mitigation, and wherever possible enhancement, to ensure these species are protected.

As part of our proposals we aim to increase the biodiversity through the introduction of green infrastructure. This will comprise new publicly accessible greenspace, including an equipped play area, recreational paths, and the retention of trees and hedgerows.

---



[www.your-views.co.uk/holt](http://www.your-views.co.uk/holt)

---

[www.gladmanland.co.uk](http://www.gladmanland.co.uk)

01260 288800

*Gladman consider all correspondence received and our response to the issues raised will be set out in a Statement of Community Involvement (SCI). As part of a planning application, Gladman submit to the Local Planning Authority a complete copy of all correspondence received (including any details such as your name, address and email where you have provided them). This ensures all your comments are available to the Council during the consideration of an application and shows who we have consulted. As the SCI forms part of the formal application documents, the Council may publish it online, subject to their own Data Protection policies. Should the application be the subject of an appeal, the same information will be forwarded to the Planning Inspectorate. If further consultation is carried out as part of the planning process, Gladman may use your details to make you aware of this and to ask for your views, but will not use this information for any other purpose.*